

Telling the time to the minute

2+2=4

Fluency



1) Complete the missing numbers from the table below.

a) $29 + \square = 60$

b) $60 - \square = 17$

c) $60 - \square = 34$

d) $12 + 15 + \square = 60$

e) $24 + 19 + \square = 60$

f) $\square + 38 + 8 = 60$

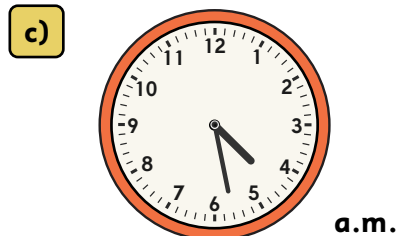
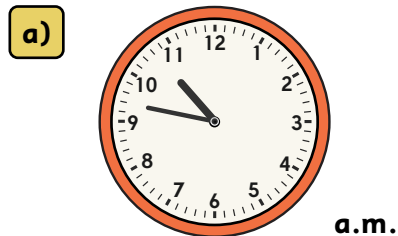
Telling the time to the minute

2+2=4

Fluency



2) a) Write down the time being shown by each clock. e.g. ___ minutes to/past ___



b) Place these times in descending order.

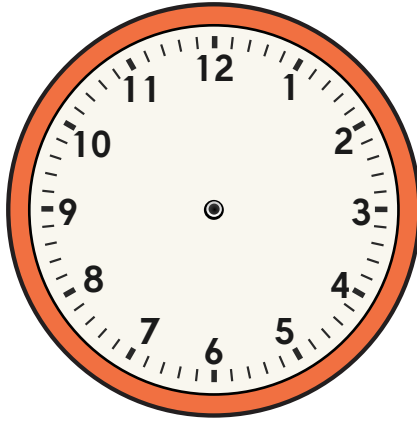
Telling the time to the minute

$$2+2=4$$

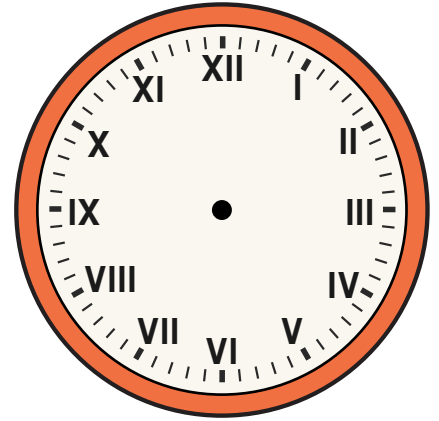
Fluency



3) Draw on the hour and minute hand on each clock to show the time given.



XXIV minutes to IX



XIX minutes past XI

Telling the time to the minute



Explanation



4) The minute hand is missing from this clock.

These children explain where they think it might be by looking at the hour hand.



Grace

I think the minute hand is between the 2 and 3.



Mabel

I think the minute hand is between the 11 and 12.



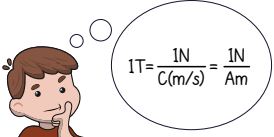
Oscar

I think the minute hand is between the 6 and 7.

Who do you agree with? _____

Explain your answer.

Telling the time to the minute



Problem solving



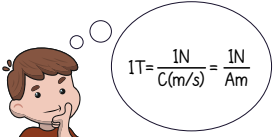
5) Which one of these times is closest to 3:30?

Tick the correct answer.



75 minutes past 1 o'clock.

Telling the time to the minute

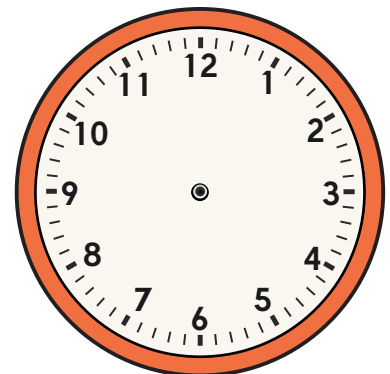


Problem solving



6)

I leave school at the time on the clock on the left. It takes me 27 minutes to get to the bus stop. I am then on the bus for 19 minutes. It then takes me another 7 minutes to walk home. Draw the time I get home on the clock on the right.



Time I leave school.

Time I arrive home.

Telling the time to the minute

2+2=4

Fluency



ANSWERS

1) Complete the missing numbers from the table below.

a) $29 + 31 = 60$

b) $60 - 43 = 17$

c) $60 - 26 = 34$

d) $12 + 15 + 33 = 60$

e) $24 + 19 + 17 = 60$

f) $14 + 38 + 8 = 60$

Telling the time to the minute

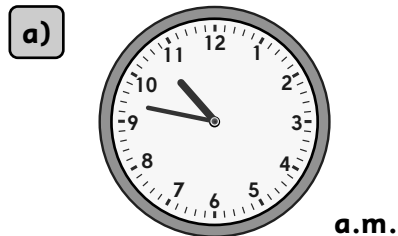
2+2=4

Fluency

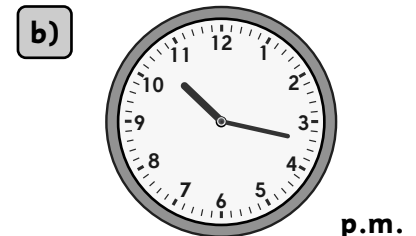


ANSWERS

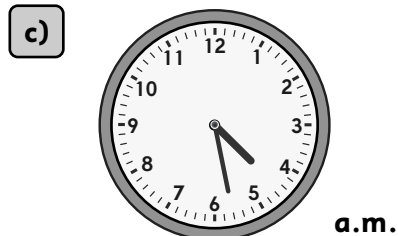
2) a) Write down the time being shown by each clock. e.g. ___ minutes to/past ___



13 minutes to 11



17 minutes past 10



28 minutes past 4



22 minutes to 2

b) Place these times in descending order.

b)

d)

a)

c)

Telling the time to the minute

$$2+2=4$$

Fluency

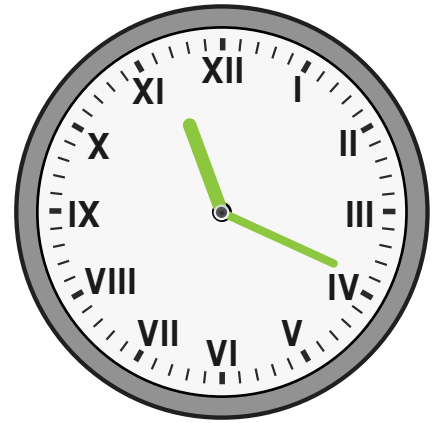


ANSWERS

3) Draw on the hour and minute hand on each clock to show the time given.



XXIV minutes to IX



XIX minutes past XI

Telling the time to the minute



Explanation



ANSWERS

4) The minute hand is missing from this clock.

These children explain where they think it might be by looking at the hour hand.



Grace

I think the minute hand is between the 2 and 3.



Mabel

I think the minute hand is between the 11 and 12.



Oscar

I think the minute hand is between the 6 and 7.

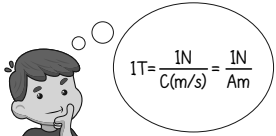
Who do you agree with? **Mabel**

Explain your answer.

The hour hand is very close to the next hour which means it is almost

o'clock. This means that the minute hand is probably between 11 and 12.

Telling the time to the minute



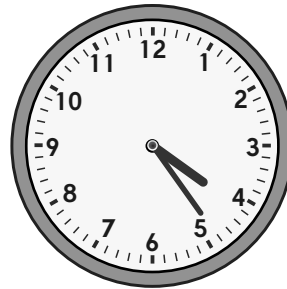
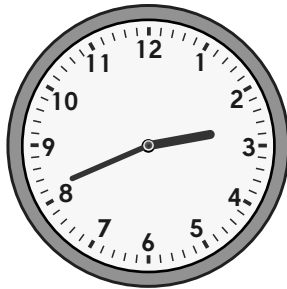
Problem solving



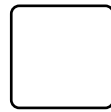
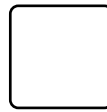
ANSWERS

5) Which one of these times is closest to 3:30?

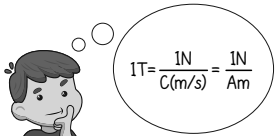
Tick the correct answer.



75 minutes past 1 o'clock.



Telling the time to the minute



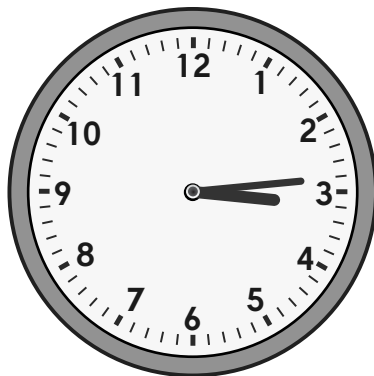
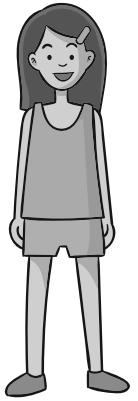
Problem solving



ANSWERS

6)

I leave school at the time on the clock on the left. It takes me 27 minutes to get to the bus stop. I am then on the bus for 19 minutes. It then takes me another 7 minutes to walk home. Draw the time I get home on the clock on the right.



Time I leave school.



Time I arrive home.