

# Telling the time to the minute

2+2=4

Fluency



1) Complete the missing numbers below.

a) 38 +  = 60

b) 11 +  = 60

c) 54 +  = 60

d) 26 +  = 60

e) 45 +  = 60

f) 7 +  = 60

# Telling the time to the minute

2+2=4

Fluency



2) Write down the time being shown by each clock.



\_\_\_\_\_ minutes past \_\_\_\_\_



\_\_\_\_\_ minutes to \_\_\_\_\_



\_\_\_\_\_ minutes to \_\_\_\_\_



\_\_\_\_\_ minutes past \_\_\_\_\_

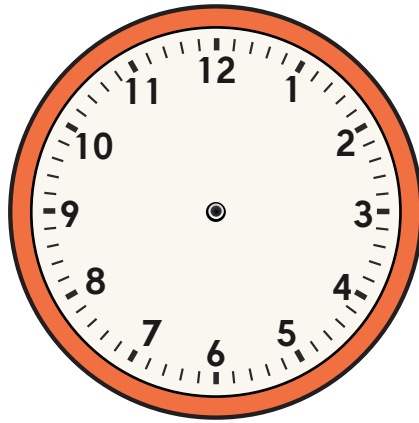
# Telling the time to the minute

$$2+2=4$$

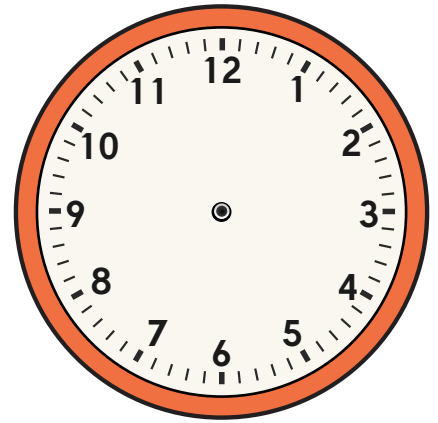
Fluency



3) Draw on the minute and hour hand to show the times below.



Seventeen minutes  
past eight



Twelve minutes  
to six

# Telling the time to the minute

$$2+2=4$$

Fluency



4) Complete the missing numbers to make these comparisons correct.

Twenty-two  
minutes past 7

=

\_\_\_\_\_ minutes to 8

\_\_\_\_\_ minutes past 3

=

44 minutes to 4

Eighteen minutes  
past 1

=

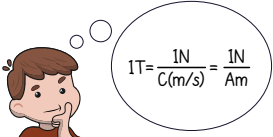
\_\_\_\_\_ minutes to 2

33 minutes to 11

=

\_\_\_\_\_ minutes past 10

# Telling the time to the minute



Problem solving



5) The minute hand is missing from this clock.

It is between 6 and 7.

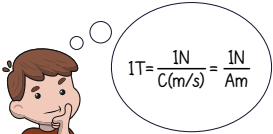
It is closer to 7 than it is 6.

What two times could it be?



or

# Telling the time to the minute

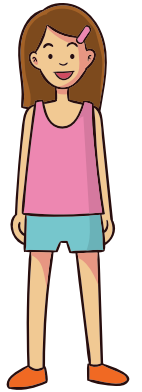


Problem solving

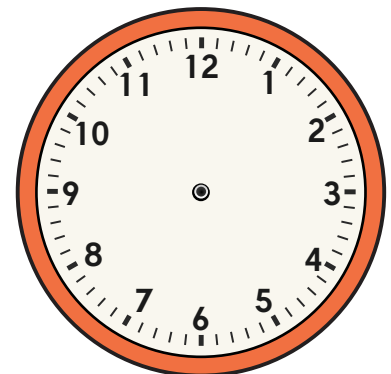


6)

I leave school at the time shown on the clock below. It takes me 23 minutes to get back home. Draw the minute and hour hands on the blank clock to show the time I get home.



Time I leave school.



Time I arrive home.

# Telling the time to the minute

2+2=4

Fluency



ANSWERS

1) Complete the missing numbers below.

a)  $38 + 22 = 60$

b)  $11 + 49 = 60$

c)  $54 + 6 = 60$

d)  $26 + 34 = 60$

e)  $45 + 15 = 60$

f)  $7 + 53 = 60$

# Telling the time to the minute

2+2=4

Fluency



ANSWERS

2) Write down the time being shown by each clock.



8 minutes past 3



11 minutes to 7



28 minutes to 2



24 minutes past 12

# Telling the time to the minute

$$2+2=4$$

Fluency



ANSWERS

3) Draw on the minute and hour hand to show the times below.



Seventeen minutes  
past eight



Twelve minutes  
to six

# Telling the time to the minute

$$2+2=4$$

Fluency



ANSWERS

4) Complete the missing numbers to make these comparisons correct.

Twenty-two  
minutes past 7

=

38 minutes to 8

16 minutes past 3

=

44 minutes to 4

Eighteen minutes  
past 1

=

42 minutes to 2

33 minutes to 11

=

27 minutes past 10

# Telling the time to the minute



$$1T = \frac{1N}{C(m/s)} = \frac{1N}{Am}$$

Problem solving



ANSWERS

5) The minute hand is missing from this clock.

It is between 6 and 7.

It is closer to 7 than it is 6.

What two times could it be?



1:33

or

1:34

# Telling the time to the minute



$$1T = \frac{1N}{C(m/s)} = \frac{1N}{Am}$$

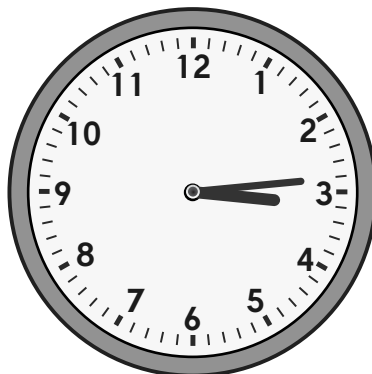
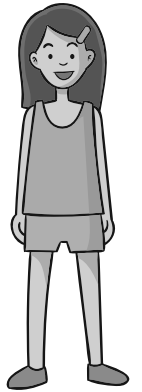
Problem solving



ANSWERS

6)

I leave school at the time shown on the clock below. It takes me 23 minutes to get back home. Draw the minute and hour hands on the blank clock to show the time I get home.



Time I leave school.



Time I arrive home.